

# XENON - 120V

Economical and easy to use line voltage puck - no transformer needed!

## Performance

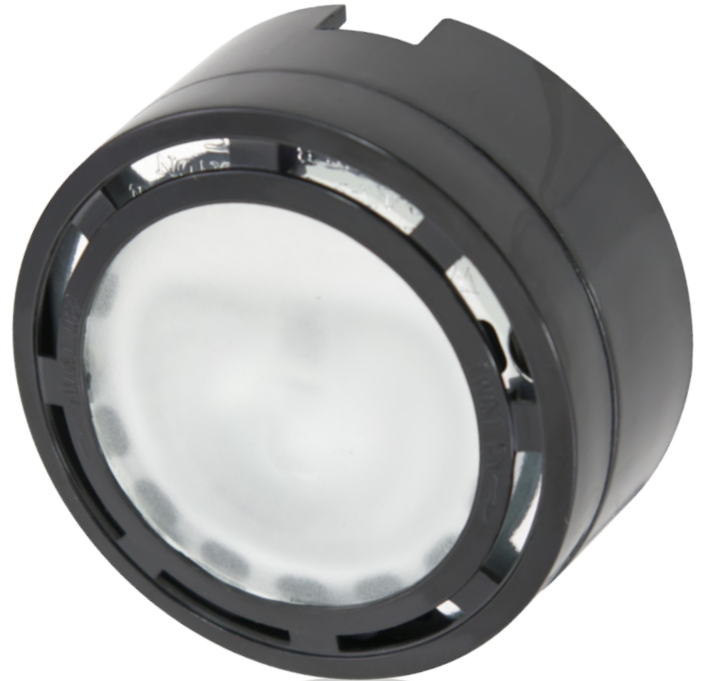
- Versatile - build a system using kits and/or individual pucks
- Dimmable with standard incandescent dimmers
- Pucks emit 50+ lumens each with 100 CRI

## Construction

- Heavy duty hard plastic housing with frosted glare-free tempered glass lens
- Aluminum reflector optimizes light and dissipates heat
- 18AWG SPT-1 leads are 4' in length for easy routing
- Surface ring has built-in ventilation openings

## Installation

- Recess or surface mount - easy twist-off design separates collar from puck for recessed applications (recess pucks require a 2-1/8" cut-out)
- Build your own system with single pucks and/or individual puck lights
- Convenient 2- and 3-light kits include power cord with roll switch and 12" linking cable(s)



## Specifications

Series	LVPX
Input voltage	120V AC, 60Hz
Color temperature	3200K
CRI	100
Wattage	20W per puck
Lumens	115Lm
Maximum run	200 watts
Beam angle	65°
Dimming	Most standard incandescent
Housing	Heavy duty plastic
Lens	Frosted tempered glass
Rating	c/UL/us Listed, dry locations
Dimensions	2-3/4" Dia. x 1-3/8" or 1/2"H
Switching	Roll-switch (kits) or ALSLBOX
Mounting	Surface or recess, screws included
Linking	Up to ten with ALLVPEX cables
Lamp specs	120V Xenon, G8 base, 1-3/8" MOL
Rated life	8,000 hrs

## Building a System

### Determine Layout and Installation:

- Determine quantities, locations and type of installation
1. Hardwire
  2. Cord and Plug

### Select Power Input Accessories:

1. Hardwire: Order ALSLBOX for each power feed location
2. Cord and plug: Order individual or 3-pack kits and additional pucks individually as needed to fill in quantity

### Select Linking Accessories:

- Use linking cables between pucks as needed (12" ones are included in kits). Order a 12" (minimum length) linking cable to reach the ALSLBOX

120V Xenon Pucks



**LVPX20BK-B**  
120V Xenon Puck - Black  
20W / 115Lm



**LVPX20WH-B**  
120V Xenon Puck - White  
20W / 115Lm

Individual 120V Xenon pucks include 3" lead wire, 3" tail wire and mounting screws

120V Xenon Puck Kits



**LVPX20BK**  
Single Puck Kit - Black  
**LVPX40BK**  
Two Puck Kit - Black  
**LVPX80BK**  
Four Puck Kit - Black



**LVPX20WH**  
Single Puck Kit - White  
**LVPX40WH**  
Two Puck Kit - White  
**LVPX80WH**  
Four Puck Kit - White

Single puck kits include (1) puck with 3" lead wire, (1) 6' power cord with inline switch and mounting screws.

Two puck kits include (1) puck with 3" lead wire, (1) pucks with 3" lead and 3" tail wire, (1) 12" linking cables, (1) 6' power cord with inline switch and mounting screws.  
Four puck kits include (1) puck with 3" lead wire, (3) pucks with 3" lead and 3" tail wire, (3) 12" linking cables, (1) 6' power cord with inline switch and mounting screws.

120V Xenon Puck Accessories



**ALSLBOX-WH-B** (White)  
**ALSLBOX** (Black)  
Slimline hardwire box  
c/UR/us Recognized, dry locations



**ALLVP-PC6-WH** (White)  
**ALLVP-PC6** (Black)  
6ft power cord  
c/UL/us Listed



Linking Cable - Black  
**ALLVPEX12** 12"  
**ALLVPEX24** 24"



**LVPX20BP** (2-Pack)  
Replacement 120V xenon lamps  
20 watt / 8,000hr rated life  
1-3/8" M.O.L.



**ALLVP20B** (2-Pack)  
Replacement 120V halogen lamps  
20 watt / 2,500hr rated life  
1-3/8" M.O.L.



Linking Cable - White  
**ALLVPEX12WH** 12"  
**ALLVPEX24WH** 24"